

Furness Railway Wagon Co.

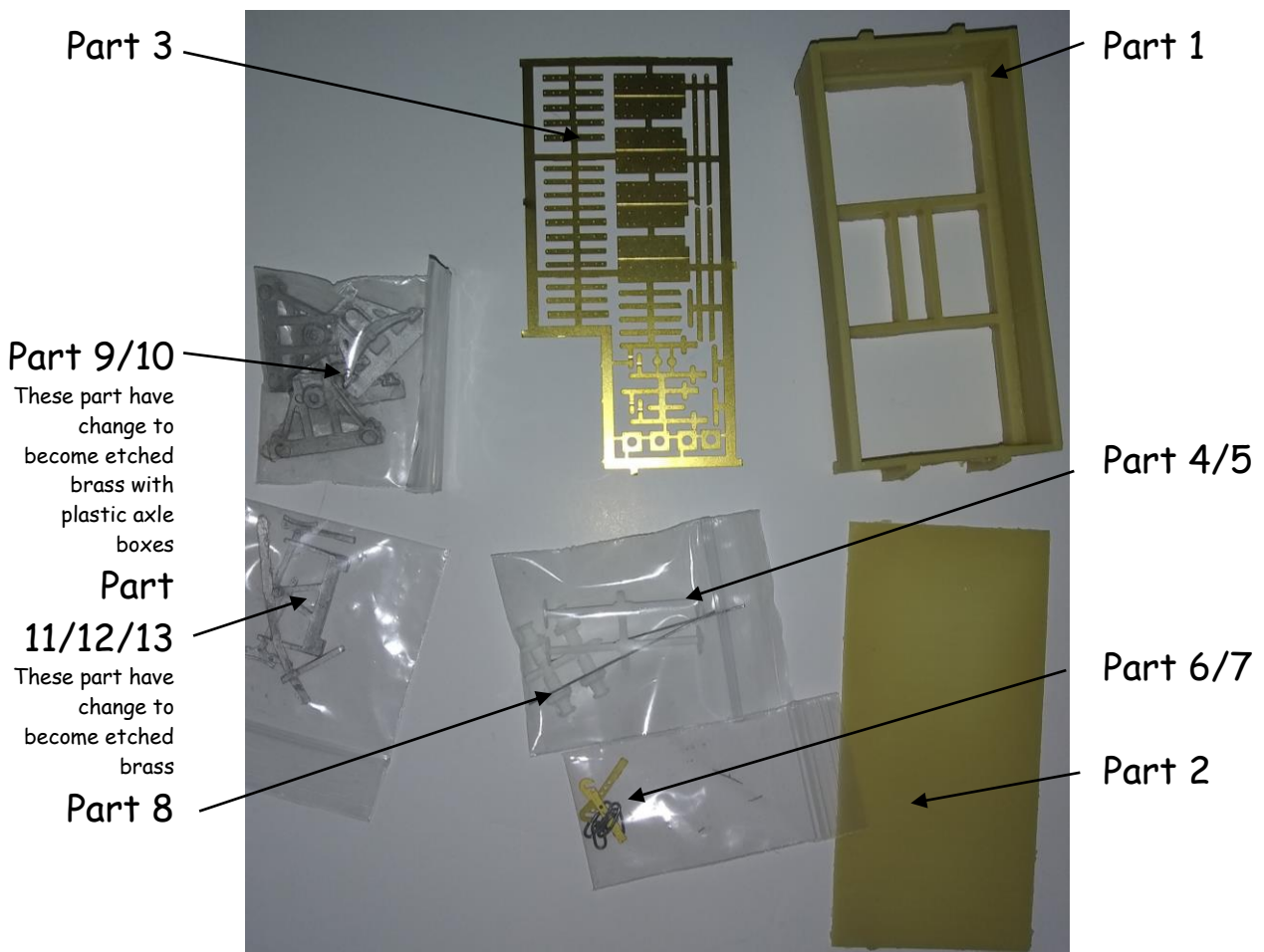
Cambrian Railways/GWR

10ton 4 Plank Open Wagon

Wheels, paint and transfers required to complete.

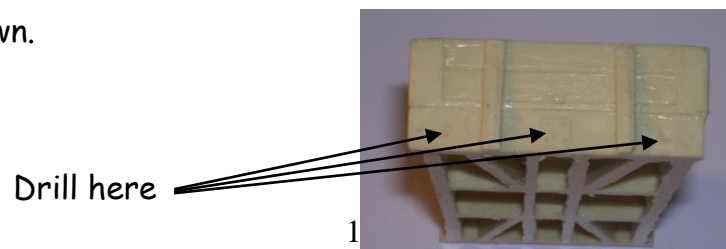
Please note that to aid the folding of the various parts score all the halfetched foldlines that are to be folded.

The Parts.

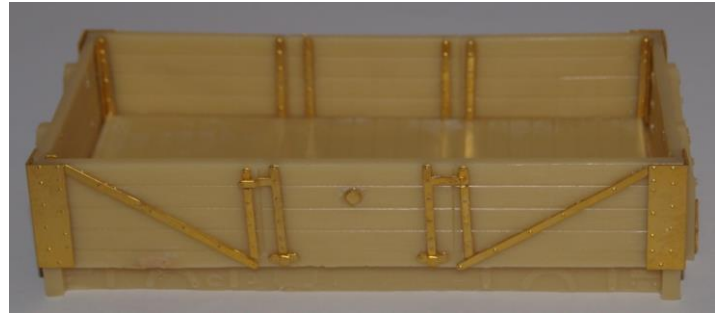
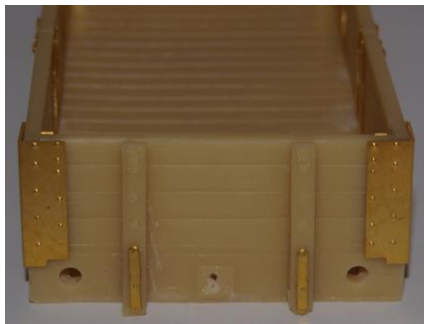


Wagon Construction.

1. Clean up the wagon body (part 1) by removing any excess material.
2. Drill out the holes, both ends, for the buffers and coupling hooks as shown.

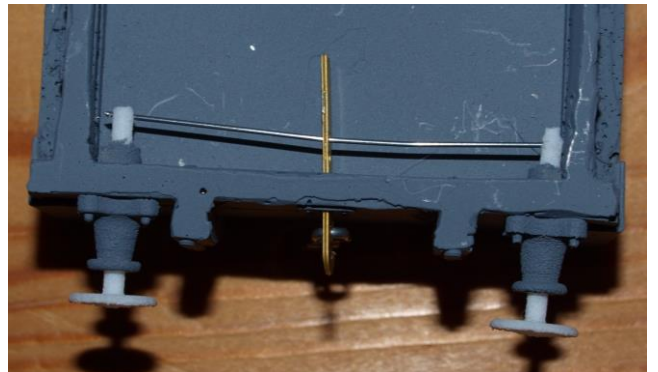


3. Cut to size and fit the floor (part 2).
4. Next punch out the rivets on the strapping etch (part 3) and glue to the wagon as shown.



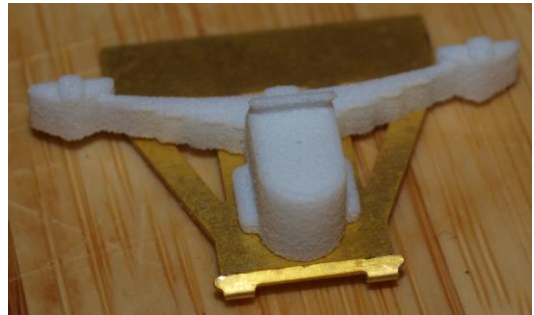
5. Glue in the buffer guides (part 4) into the buffer beam.
6. Drill out the holes in the ends of the buffer heads (Part 5) using a 0.5mm drill

1. slide the buffer heads through the guides
2. assemble the 3 link couplings (part 6) onto the hooks (part 7)
3. cut the piano wire (part 8) to length

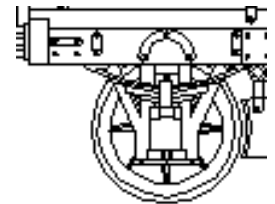


4. Slide the wire through the coupling hook, using the hole closet to the back of the buffer beam. Then slide it through one of the holes in the buffer heads. Once the wire is hard up against the back of the sole bar slide the wire back into the hole in the other buffer head

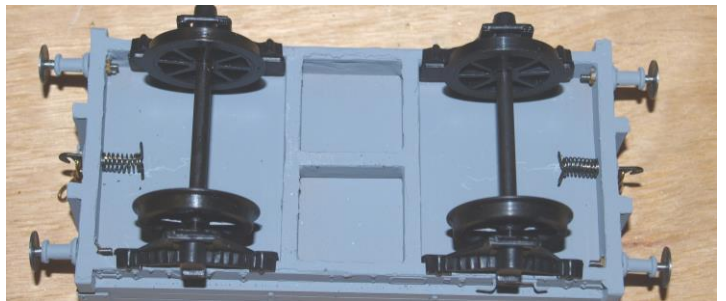
7. Assemble a wheel set, 2 x etched W-iron's (part 9), 2 x bearing's and 1 x wheel/axle unit and 2 Axle boxes (part 10), do not glue the bearings into the W-irons. Again



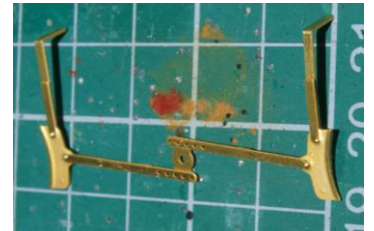
using two-part epoxy resin, glue the assembled wheel set onto the sole-bars so that they are square and line up with the rivets as shown on the drawing.



8. Repeat for the other wheel set. Use a straight edge across the back of the wheels to aid getting these parallel and square to the chassis.



9. Then laminated brake block etch (part 11/12)



10. Attach the "V" hangers (part 13) to either side of the sole bar and then attach the brake blocks to the inside of the sole-bar as shown making sure that the brake block does not foul the wheels.



11. Next fix the brake lever (part 14) and brake ratchet (part 15) to the sole-bar and to the outside of the brake gear pivot as shown.
12. Finally you are now ready to paint the model in the livery of your choice.



History of the Wagon

At least 550 of these wagons were built between 1871 and 1921. Very little is known about the early versions of the wagons but there are some photographs and drawings of some of the later versions. They were mainly built at the Cambrian's own workshop at Oswestry, but some were built by outside contractors: Ashbury's 1882 and 1897; Metropolitan Railway Carriage and Wagon Company 1890 and 1893 and RY Pickering's in Glasgow in 1902. Although the design of the wagon didn't change some were fitted with a sheeting rail and others with coke raves.

Most of the wagons were absorbed into the GWR. As these wagons had wooden underframes they would have been removed from GWR quite quickly. The last wagon of this type was scrapped in February 1945.

In Cambrian Railways days the wagons would have been painted grey with the iron work picked out in black. They would have had "CAM RLY" in large letters on the side of the wagon with a "Prince of Wales" plume of feathers in the centre. After 1915 this livery was change so that the word "CAMBRIAN" went right across the side of the wagon and the picking out of the iron work became optional. There is no specific shade of grey mentioned by the Cambrian Railways Company. The wagons would have also been painted GWR dark grey from 1923 to 1945.

Sample running numbers:

- 304 built 1900 Oswestry renumber 27234 by the GWR in Oct-23 scrapped Aug-34
- 1014 built 1917 Oswestry (fitted with sheet rail) renumbered 28327 by GWR in Apr-23 scrapped Jul-27
- 1907 built 1893 by Metropolitan C&W renumbered 30701 by the GWR and scrapped in Aug-27

- 2211 built 1897 by Ashbury renumbered 31742 by the GWR and scrapped Aug-25
- 2349 built 1902 Pickering's renumbered 31835 by the GWR in Jan-23 scrapped Jun-35

Liveries

Early Cambrian
Railways Livery



Late Cambrian
Railways Livery

Numbers



GWR early Livery
Circ 1923-36



Furness Railway Wagon Co.

Cambrian Railways/GWR 10ton 4 Plank General Merchandise Wagon

- One wagon body casting,
- One floor casting,
- Four end support castings,
- One brake gear etch
- One strapping etch,
- One W-iron etch
- Four axle boxes,
- 2 'V' Hangers etched,
- Four buffer guides
- Four buffer heads,
- Two pieces of piano wire ,
- Six coupling links,
- One set of etched coupling hooks.

We recommend Haywood Railway's 3'1" split spoke wheels.

Transfers are available from the Welsh Railways Research Circle.