

Furness Railway Wagon Co.

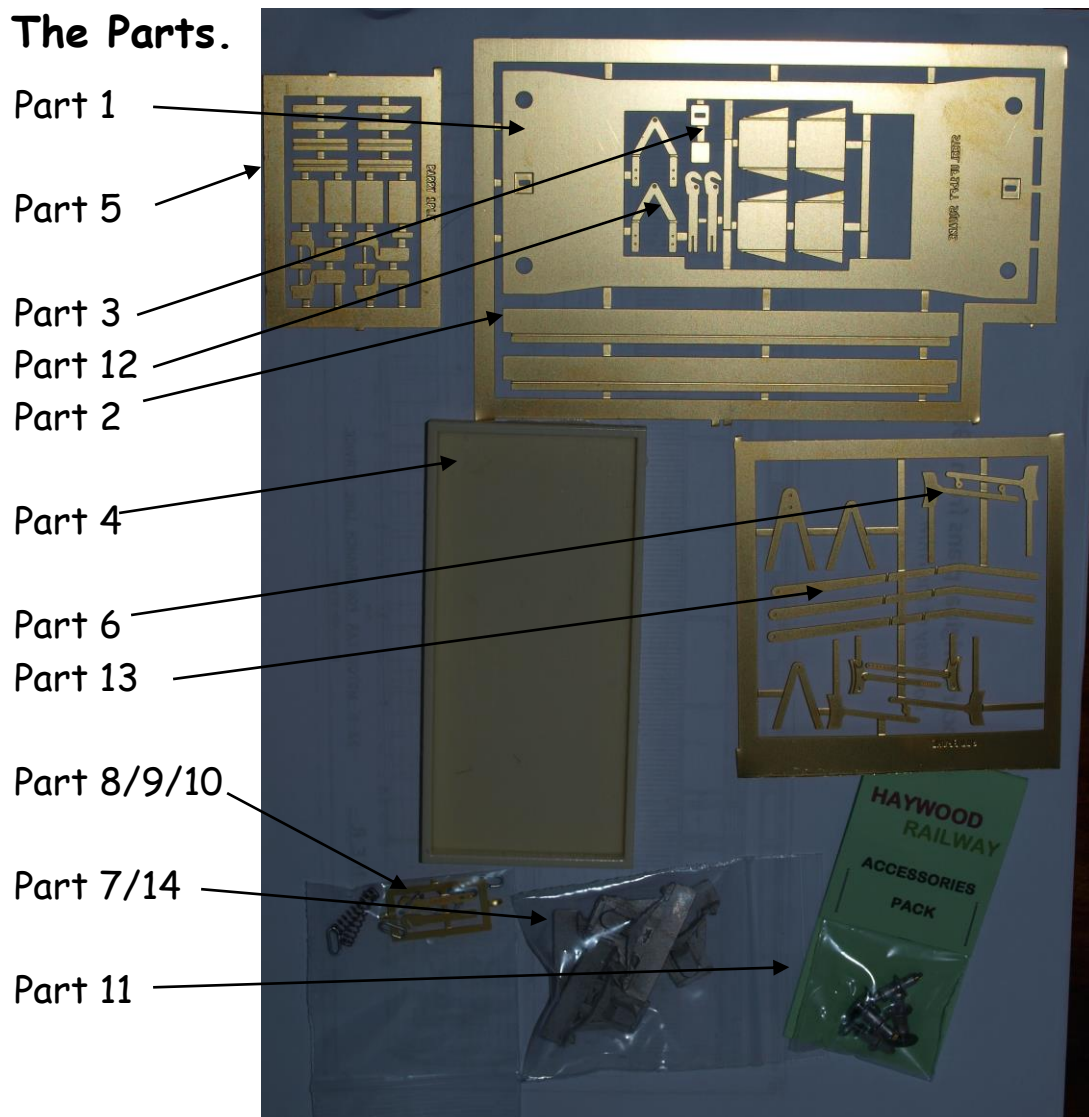
Barry/GWR/BR

10ton 1 Plank General Merchandise Wagon

Wheels, paint and transfers required to complete.

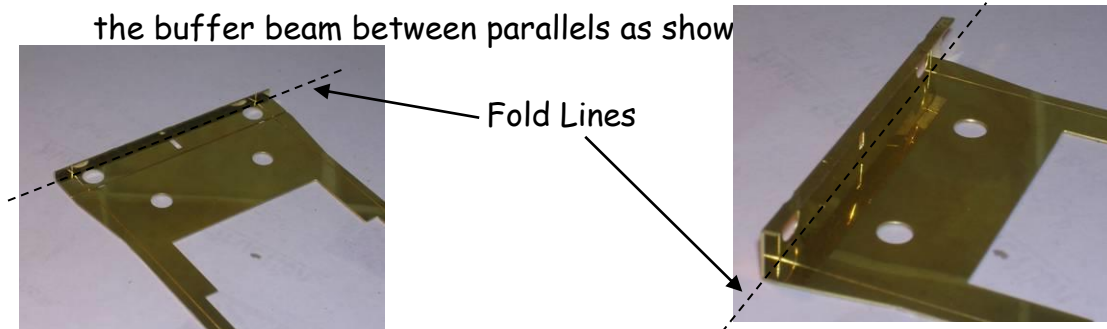
Please note that to aid the folding of the various parts score all the halfetched foldlines that are to be folded.

The Parts.

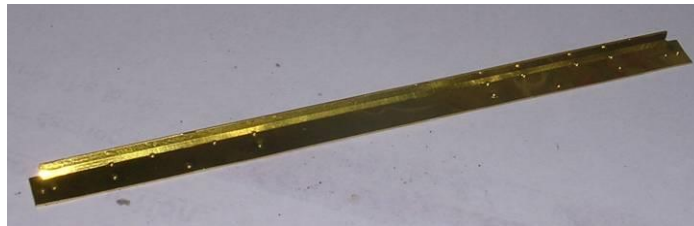


Chassis Construction.

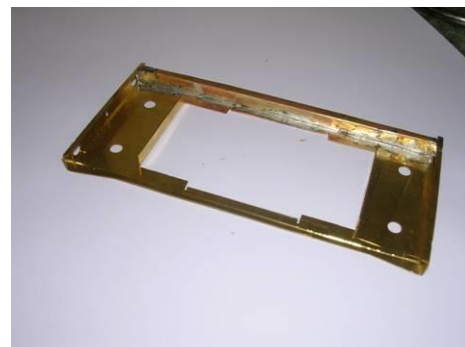
1. Remove chassis (part 1) from the etch and fold up the bottom of the buffer beam between parallels as show



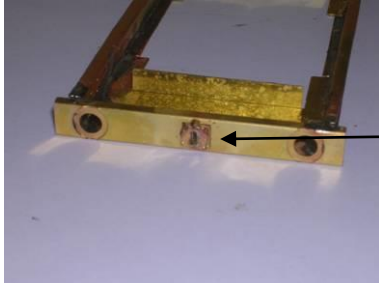
2. Next fold up the buffer beam completely as shown. Make sure that the resulting U shape is square so as to fit the sole bars. Repeat for the other end of the chassis.
3. Remove the sole-bars (part 2) and punch out the rivets. Next fold up the bottom of the sole-bars between two parallels. Make sure that the resulting shape is square.



4. Click one of the sole-bars in to the half etch slot that runs between the two buffer beams. Solder into position using 188C solder. Make sure that the sole-bars are actually soldered inside the buffer beam. Repeat for the other sole-bar.



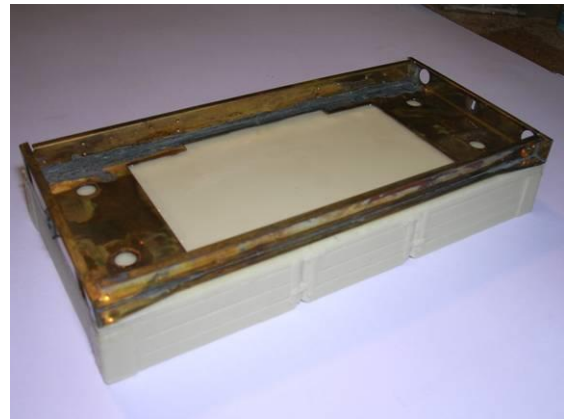
- Next remove the buffer beam reinforcing plates (part 3) and punch out the half etched rivets and tin the back of each piece with 188C solder. Now sweat the plates onto the half etched square in the front of the buffer beam.



Buffer beam reinforcing plates

Final Assembly of soldered components.

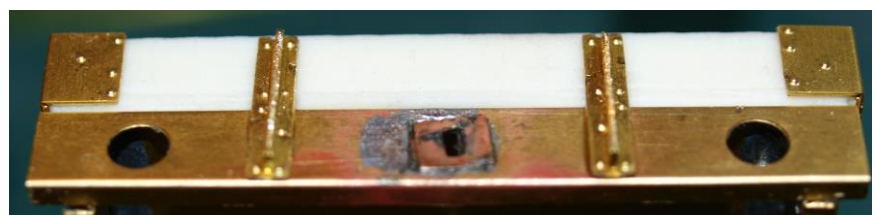
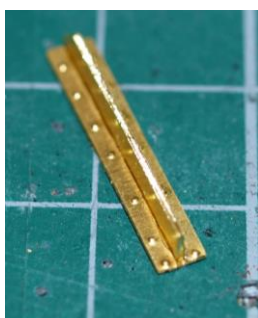
- Position the top of the wagon (part 4) in the middle of the chassis with both the bottom of the hopper through the slot in the top of the chassis. Glue the chassis to the top.



- Attach two of the strapping (part 5) to the wagon as shown.



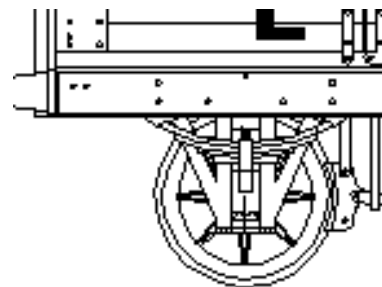
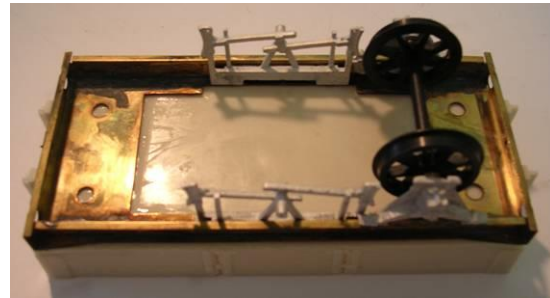
- Assemble the 'T' supports and fit them to the ends of the wagon.



4. Place the brake gear etch (part 6) against the inside of sole-bar and slide down into the chassis with the spigot pointing outward. You may require to chamfer the casting so that it clears the solder fillet between the chassis and the sole-bar. Glue the casting into position using two part epoxy resin, this will give you opportunity for adjustment. Position the casting with care centrally between the rivets on the sole-bar.



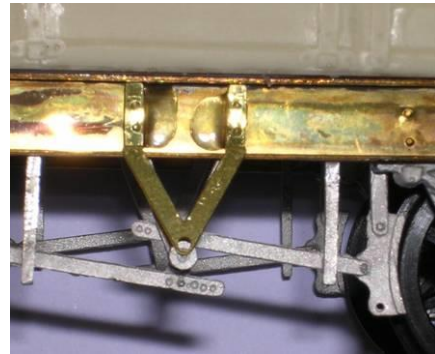
5. Drill out the w-iron castings to suit the bearings of your chosen wheels. Assemble a wheel set, 2 x W-iron's (part 7), 2 x bearing's and 1 x wheel/axle unit, do not glue the bearings into the W-irons at this stage. Again using two part epoxy resin, glue the assembled wheel set onto the sole-bars so that they are square and line up with the rivets as shown in the drawing.



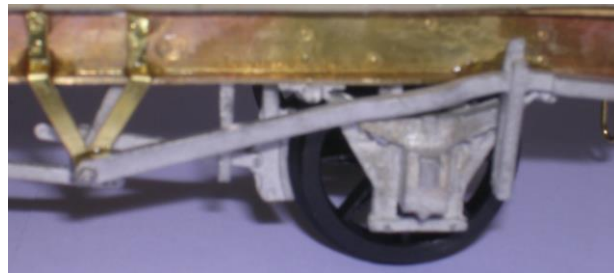
6. Repeat for the other wheel set. Use a straight edge across the back of the wheels to aid getting these parallel and square to the chassis.

7. Next, assemble the links (part 8) on to the coupling hook (part 9) and push through the slot. Now push the spring (part 10) over the back of the back of the coupling hook and bend the tags over to secure the spring in place. Then fix the four buffers (part 11) into the holes in the buffer beam using two part epoxy.

8. Rivet the outside V-hanger (part12) if required, fold up, and glue into position on the sole-bar and to the spigot of the brake gear casting.



9. Next fix the brake lever (part 13) and ratchet casting (part 14) to the sole-bar and to the out side V-hanger as shown below.



10. Finally paint the model in the livery of your choice.



History of the Wagon

In 1890 the Barry Railway company ordered a 10 of 10ton 3 plank drop side general merchandise wagons. These were followed by a further 20 in 1898. The wagons, were of an wooden top with a steel under-frame construction.

The wagons were mainly used to convey general merchandise from South Wales although some of the wagons where photograph as far away as northern Scotland and south east England.

The barry railway numbered these wagons 77 to 86 and 323 to 342. The most of these wagons were absorbed into the GWR. It is possible that some of these wagons managed to last into early British Railways. Before 1914 all wagons were painted with 6inch block letters, this was changed to 16 inch letters after 1914. All Barry railway Wagons were painted chocolate brown, the wagons would have been repainted GWR Dark grey from 1923 to 1935.

Furness Railway Wagon Co.

Barry Rly/GWR/BR 10ton 1 Plank General Merchandise Wagon

1. Construction Manual,
2. One Chassis etch,
3. One strapping etch
4. One brake gear etch,
5. One brake lever ratchet casting,
6. Four W-iron/axle box castings,
7. One wagon body casting (resin),
8. Four buffer assemblies,
9. Two coupling hook springs,
10. Six coupling hook links.

We recommend Haywood Railway's 3'1" split spoke wheels.

Transfers are available from on the HMRS and POWSIDES.